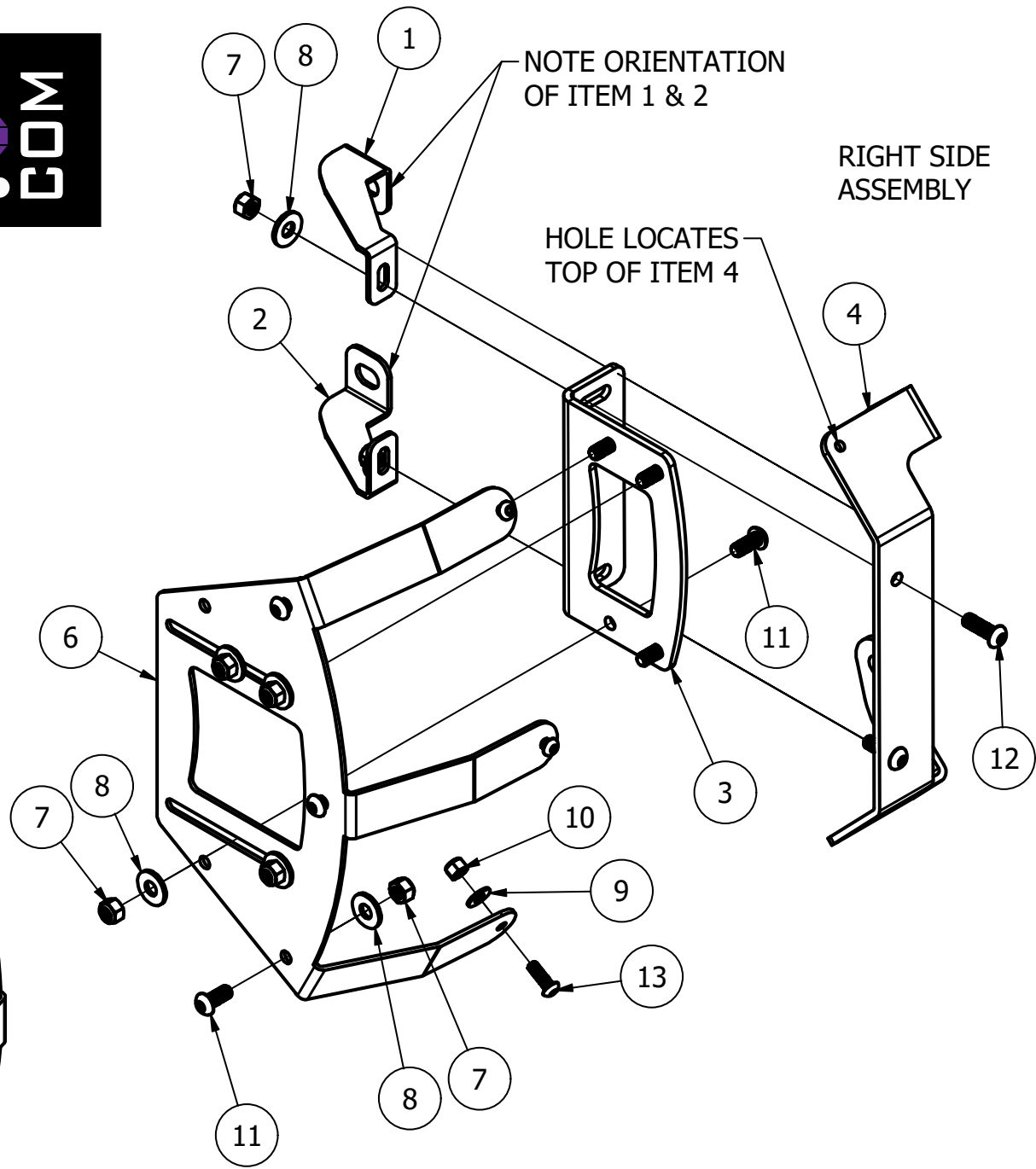
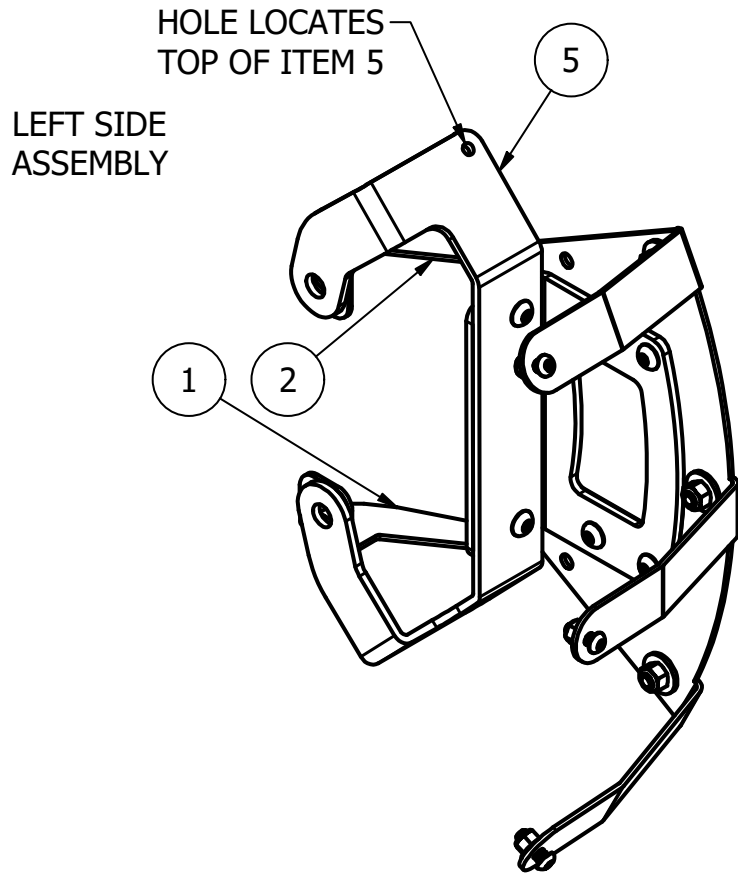


Front Fender Kit



Patent Pending 2020

Polaris Slingshot Front Fender Installation Instructions

Pre-assembly of brackets and hardware

1) Pre-assemble Part #5 - Part #3 – Part #1 – Part #2 (see diagram)

*****NOTE – For Part #5 – the “Location Hole must be facing upward when fastened to the brake caliper. If it is not facing upward then you have switched the right and left sides. (see diagram)**

2) Pre-assemble #6 and #14 – Insert all bolts, nut and washers in according to the diagram. DO NOT TIGHTEN UNTIL YOU HAVE ALL BOLTS, NUTS AND WASHERS IN PLACE. (see diagram)

a. *****NOTE- If you have purchases the optional TricLED Fender LED kit, stop and follow the LED installation instructions found on the next page.**

3) Prepare the vehicle to safely be raised/lifted according to the instructions found in the factory manual.

4) Remove tire on the side you are working on first.

5) Remove the two OEM caliper bolts. You will not be using these bolts, so take them out the area as to not confuse them with the replacement bolts.

6) Use the included 45mm Gold colored bolts to attach the pre-assembled unit from Step #1 (above) to the brake caliper. Torque to OEM factory specs.

a. **If you are installing TricLED Magic Wheel chaser rings, you will require a different bolt kit. DO NOT USE THE INCLUDED BOLTS AS DAMAGE WILL OCCUR.**

7) Attached the pre-assembled unit from Step #2 to the pre-assembled unit from Step #1. **DO NOT TIGHTEN THE BOLTS YET AS YOU WILL NEED TO MAKE ADJUSTMENTS** (see diagram).

8) Replace tire to check for fitment by using one lug-nut to hold rim to hub. You have two separate axis of adjustment to achieve the desired fitment for your model.

9) Double check the clearance between the inside fender shroud and the tire. Double check the clearance between all of the bracket hardware and the tire.

10) Remove rim and tire

11) When you have the desired position of the fender shroud, tighten ALL of the nuts and bolts. Double check all connections are properly tightened.

12) Install rim and tire and torque to factory specs found in the vehicle manual.

13) Repeat for the other side of the vehicle.

LED Strip Installation Instructions

READ CAREFULLY BEFORE STARTING

1) To prepare plastic surface for LED application. Carefully “mask off” the surface of the plastic fender with painter’s tape (3M blue tape) only leave the small channel where the LED will be applied exposed.

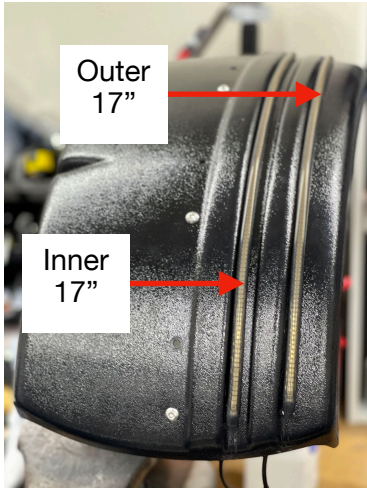
2) Once the surface is masked off – process to clean with alcohol prep pad and allow to dry.

3) Then use the Primer wipe on the surface.

4) *******DO NOT ALLOW THE PRIMER WIPE TO COME INTO CONTACT WITH ANY OTHER AREA OF THE PLASTIC FENDER. IT WILL PERMANENTLY DIS-COLOR THE SURFACE*******

POLARIS SLINGSHOT 2015+ FRONT HUGGER TRICFENDER TWIN DUAL COLOR LED'S

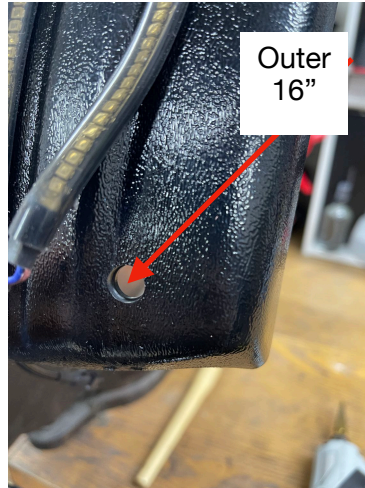
This LED installation diagram is based on the passenger side fender, repeat same process for driver side.



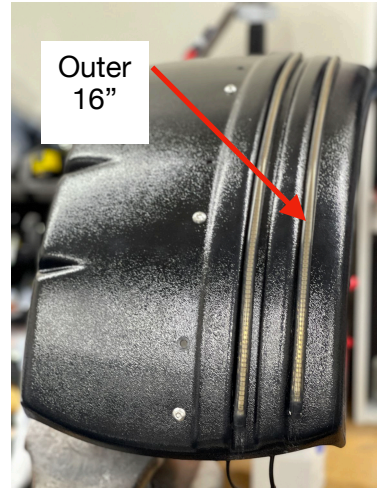
Test fit the LED strip on the fender. The inside LED strip uses the 17" and the outside 16"



After drilling the appropriate hole, slide the LED tube from the rear and pull forward.



After drilling the appropriate hole, slide the LED tube from the rear and pull forward.



****SEE Separate Page on how to prepare plastic surface for LED Application



Turn the fender over, use di-electric on all connections to protect it from the elements



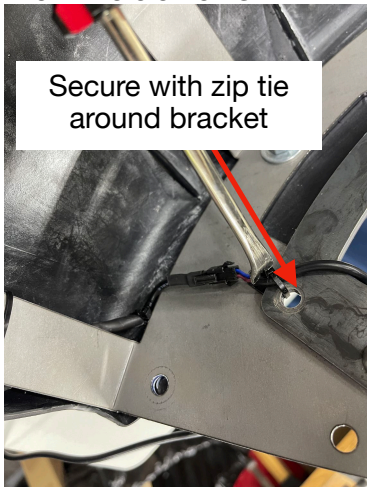
Slide the 1:2 splitter under the lower finger



Secure the splitter and wire using zip ties around



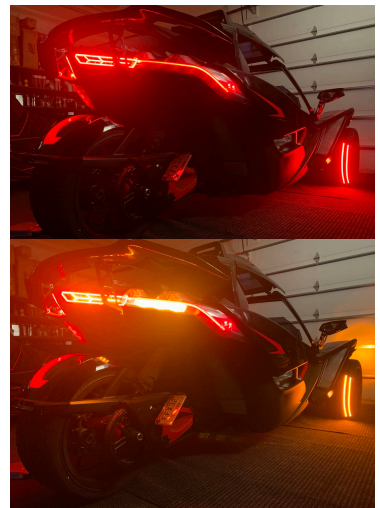
Secure extension and splitter by drilling 2 small holes in the inner plastic under the metal bracket



Running red LED



Yellow turn signal



TricLED Wheel Fender Parts Kit

ITEM	QTY	PART NUMBER	DESCRIPTION
1	2	RZ176-L	BRACE - LEFT
2	2	RZ176-R	BRACE - RIGHT
3	2	RZ177	FENDER SUPPORT BRACKET
4	1	TLFS-2021	RH - FENDER SUPPORT BASE
5	1	TLFS-2022	LH - FENDER SUPPORT BASE
6	2	TLFS-2031	FENDER SUPPORT END
7	18	119-0004	5/16-18 SS NYLOCK NUT
8	18	119-0143	5/16" SS FLAT WASHER
9	6	119-0275	1/4" S.S. WASHER
10	6	119-0311	1/4-20 S.S. NYLOCK NUT
11	14	119-0368	5/16-18 X 3/4" LG 18-8 SS BHCS - BLACK OXIDE
12	4	119-0369	5/16-18 X 1" LG 18-8 SS BHCS - BLACK OXIDE
13	6	119-0370	1/4-20 X 3/4" LG 18-8 SS BHCS - BLACK OXIDE
14	2	Fender Shroud	Left & Right Thermoformed Fenders
15	4	Caliper Bolt #45	M12x45mm (grade 10.9) Replacement Brake Caliper Bolts.
16	4	**OPTIONAL**	Required to use with TricLED Wheel Rings and LED's M12x50mm (grade 10.9) Replacement Brake Caliper Bolts. (Purchased separately)