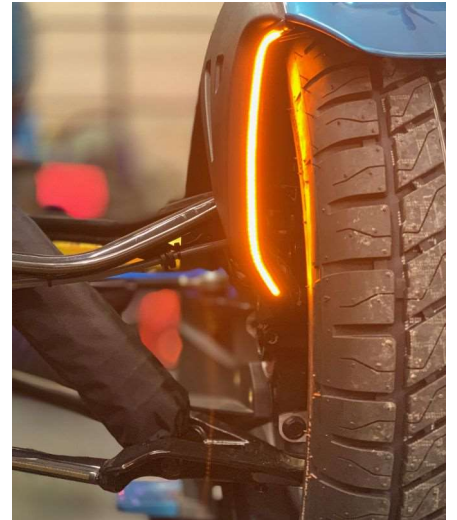


# RYKER FRONT FENDERS DRL



## Contents

- (2) LED strips
- (2) blinker modules
- (1) 1:2 splitter
- (2) 6' extension
- (2) T-Taps and spades
- (1) OEM harness
- Alcohol pads, primer



Clean thoroughly both of the plastic vertical edge of the inner fender with alcohol pad provided. When dry apply the primer.

Test fit the DRL strip with wires facing downwards. It will adhere from top down. When adhering LED strip, work your way from the top to bottom 1" at a time to make sure it adheres properly. \*\*It is important that all wires are zip tied and away from the inner fender well. Do not stretch the tube LED



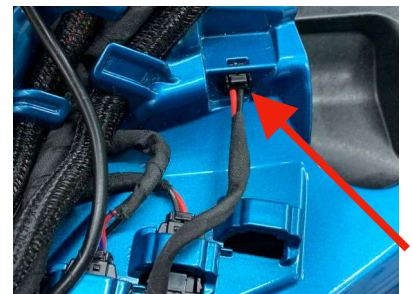
Attach the blinker module to the end of led strip. Connect the extension to module and zip tie along the suspension arm and up towards the top.



Remove the top left panel by sliding back the gas cap door back. Remove 2 left plastic push pins



Open the front glovebox and remove the 2 push pins on the left side. Remove left top cover to reveal the wire harness.



Locate the factory accessory wire, shown here and pull out from the panel.



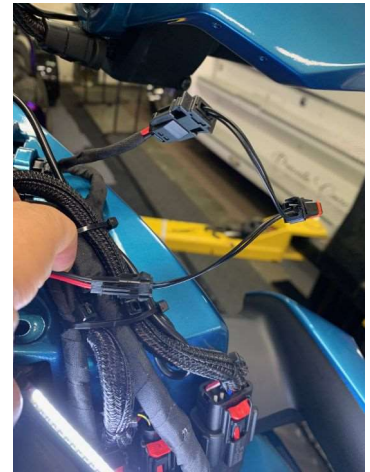
# RYKER FRONT FENDERS DRL



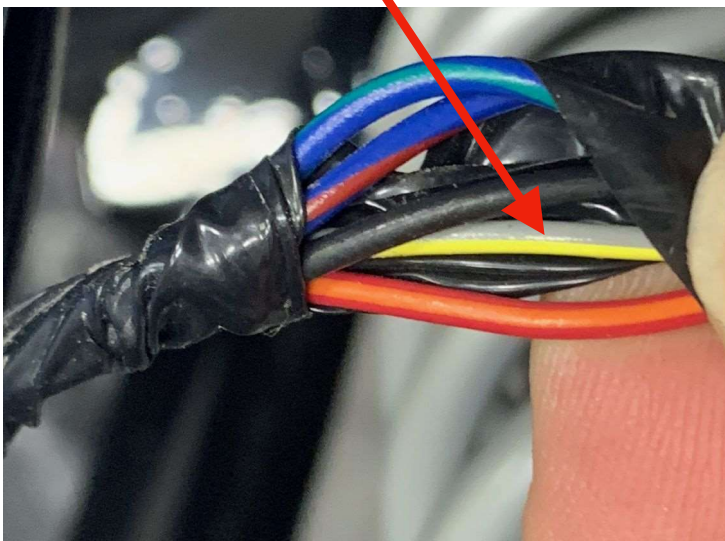
Factory OEM harness shown



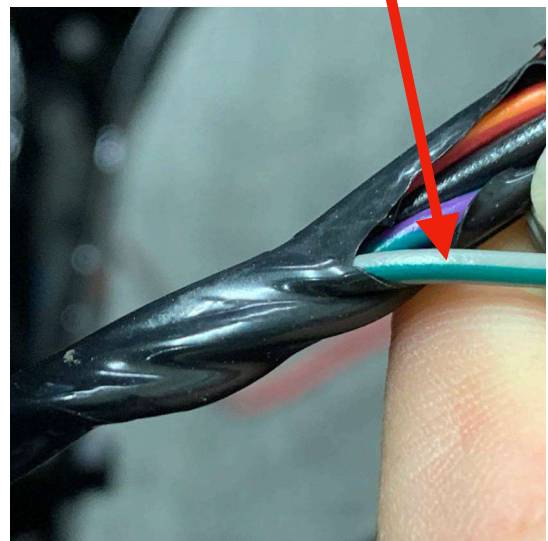
Insert the supplied harness into the OEM harness. This harness will allow you to add other accessories with its male and female end.



Connect left and right extension to 1:2 splitter then connect to the OEM harness.



To have the DRL function as a yellow turn signal, the yellow wire with gray stripe must be tapped using the supplied T Tap. Insert yellow wire into the spade and plug it into the T-Tap on the left side as shown above. The harness runs behind the top A arm in a wrapped tape, open the loom to reveal the wires.



Right side harness is also located on the bottom. Insert the spade to yellow wire from the module from right side and insert into the t tap. When finished, push the start button on the Ryker to activate the electrical system and check for the white DRL. Turn on the turn signal to switch from white DRL to yellow turn signal.